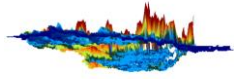


BARAKESE DAM

MAMPONG DAM

OWABI DAM

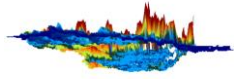
LAKE BOSUMTWI



BARAKESE DAM

General Information

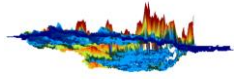
Name of Dam	Barekese Dam
Year Commissioned	1979
Region	Ashanti Region
District	
Operator of Dam	GWCL
Main Purpose	Water Supply
Secondary Purpose	-
Water Source	Ofin River
Catchment Area	906 Km ²



BAREKESE DAM

Dam/Reservoir Specifications

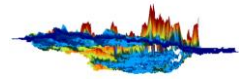
Type of Dam	Composite
Reservoir Volume	35,300,000 m ³
Type of Spillway	Mass concrete gravity block
Type of Stilling Basin	Shilling pool
Crest Level (mAD)	223.69 m
Crest Length	603 m
Crest Width	6 m
U/S slope	1V:2.5H & 1V:3.5H
D/S slope	1V:2H & 1V:3H
River Bed Level (mAD)	-
Foundation Level (mAD)	-
Height of Dam (max above river bed level)	18.5 m
Height of Dam (max above foundation level)	21.5 m
Spillway Crest Level (mAD)	220.9
Normal Retention Water Level (mAD)	220.9
Maximum Flood Water Level (mAD)	222.4



MAMPONG DAM

General Information

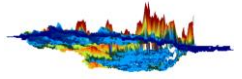
Name of Dam	Mampong Weir
Year Commissioned	1961
Region	Ashanti Region
District	
Operator of Dam	GWCL
Main Purpose	Water Supply
Secondary Purpose	-
Water Source	Chiremfa River
Catchment Area	906 Km ²



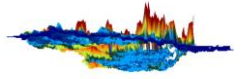
MAMPONG DAM

Dam/Reservoir Specifications

Type of Dam	Concrete gravity weir
Storage Volume	6,000 m ³
Type of Spillway	Ogee(overflow) spillway
Type of Stilling Basin	Concrete slab and downstream rock plateau
Crest Level (mAD)	-
Crest Length	-
Crest Width	-
Weir Length	90 m
Spillway Length	30 m
U/S slope	-
D/S slope	-
River Bed Level (mAD)	-
Foundation Level (mAD)	-
Height of Dam (max above river bed level)	3 m
Height of Dam (max above foundation level)	-
Spillway Crest Level (mAD)	-
Normal Retention Water Level (mAD)	-
Maximum Flood Water Level (mAD)	-

**OWABI DAM****General Information**

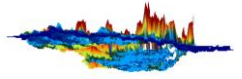
Name of Dam	Owabi Dam
Year Commissioned	1928
Region	Ashanti Region
District	
Operator of Dam	GWCL
Main Purpose	Water Supply
Secondary Purpose	-
Water Source	Owabi River
Catchment Area	60 Km ²



OWABI DAM

Dam/Reservoir Specifications

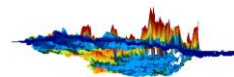
Type of Dam	Composite
Storage Volume	2,600,000 m ³
Type of Spillway	Free overflow
Type of Stilling Basin	Concrete lined channel to central stilling basin
Crest Level (mAD)	229.2 m
Crest Length	135 m
Crest Width	3.05 m
U/S slope	1V:3H
D/S slope	1V:2.5H
River Bed Level (mAD)	219.5 m
Foundation Level (mAD)	218.7 m
Height of Dam (max above river bed level)	11.5 m
Height of Dam (max above foundation level)	12.5 m
Spillway Crest Level (mAD)	227.5 m
Normal Retention Water Level (mAD)	227.5 m
Maximum Flood Water Level (mAD)	228.3 m



LAKE BOSUMTWI

General Information

Region	Ashanti Region
District	-
Mean Annual Rainfall	1450 mm
Diameter	11 km
Crater Area	106 km ²
Lake Area	52 km ²
Elevation of deepest part	21 m above mean sea level
Highest point on rim	460 m
Maximum Lake Elevation	210 m
Geology	Precambrian bedrock of schists and intruding granites



LAKE BOSUMTWI

Elevation-Surface Area–Volume Relationship

Elevation (m)	Area (km²)	Lake Volume (km³)
213.4	72.3	9.2342
198.1	69.5	8.1536
182.9	66.7	7.1155
167.6	64.1	6.1193
152.4	61	5.166
137.2	57.5	4.2627
121.9	54.9	3.4066
106.7	52	2.5921
99.8	50.6	2.2374
93.7	47.9	1.9393
78.5	40.8	1.2631
63.2	31.7	0.7107
51	23.7	0.373
38.8	14.6	0.1393
29.7	7.7	0.0375
23.6	3.3	0.0042
21.5	0.6	0.0001
21.2	0	0